

Neurology[®]

Table of Contents

Volume 82, Number 6, February 11, 2014
Neurology.org

THE MOST WIDELY READ AND HIGHLY CITED PEER-REVIEWED
NEUROLOGY JOURNAL





IN FOCUS

- 465 Spotlight on the February 11 Issue
- 497 This Week's *Neurology*[®] Podcast

EDITORIALS

- 466 The two faces of neuromyelitis optica
B.G. Weinshenker and D.M. Wingerchuk
- 468 *ATP1A3* mutations: What is the phenotype?
A. Brashear, L.J. Ozelius, and K.J. Swadner

ARTICLES

- 470 Potassium channel KIR4.1-specific antibodies in children with acquired demyelinating CNS disease
V. Kraus, R. Srivastava, S.R. Kalluri, U. Seidel, M. Schuelke, M. Schimmel, K. Rostasy, S. Leiz, S. Hosie, V. Grummel, and B. Hemmer
- 474 Distinction between MOG antibody-positive and AQP4 antibody-positive NMO spectrum disorders
D.K. Sato, D. Callegaro, M.A. Lana-Peixoto, P.J. Waters, F.M. de Haidar Jorge, T. Takahashi, I. Nakashima, S.L. Apostolos-Pereira, N. Talim, R.F. Simm, A.M. Martins Lino, T. Misu, M.I. Leite, M. Aoki, and K. Fujihara
 **Editorial, p. 466**
- 482 Genotype-phenotype correlations in alternating hemiplegia of childhood
M. Sasaki, A. Ishii, Y. Saito, N. Morisada, K. Iijima, S. Takada, A. Araki, Y. Tanabe, H. Arai, S. Yamashita, T. Ohashi, Y. Oda, H. Ichiseki, S. Hirabayashi, A. Yasuhara, H. Kawawaki, S. Kimura, M. Shimono, S. Narumiya, M. Suzuki, T. Yoshida, Y. Oyazato, S. Tsuneishi, S. Ozasa, K. Yokochi, S. Dejima, T. Akiyama, N. Kishi, R. Kira, T. Ikeda, H. Oguni, B. Zhang, S. Tsuji, and S. Hirose
Editorial, p. 468
- 491 Guillain-Barré syndrome associated with preceding hepatitis E virus infection
B. van den Berg, A.A. van der Eijk, S.D. Pas, J.G. Hunter, R.G. Madden, A.P. Tio-Gillen, H.R. Dalton, and B.C. Jacobs
 **See p. 498**


- 498 Neuralgic amyotrophy and hepatitis E virus infection
J.J.J. van Eijk, R.G. Madden, A.A. van der Eijk, J.G. Hunter, J.H.J. Reimerink, R.P. Bendall, S.D. Pas, V. Ellis, N. van Alfen, L. Beynon, L. Southwell, B. McLean, B.C. Jacobs, B.G.M. van Engelen, and H.R. Dalton
See p. 491
- 504 High plasma estradiol interacts with diabetes on risk of dementia in older postmenopausal women
L. Carcaillon, S. Brailly-Tabard, M.-L. Ancelin, O. Rouaud, J.-F. Dartigues, A. Guiochon-Mantel, and P.-Y. Scarabin

- 512 Satiety-related hormonal dysregulation in behavioral variant frontotemporal dementia
J.D. Woolley, B.K. Khan, A. Natesan, A. Karydas, M. Dallman, P. Havel, B.L. Miller, and K.P. Rankin
- 521 Myoinositol and glutamate complex neurometabolite abnormality after mild traumatic brain injury
A.S. Kierans, I.I. Kirov, O. Gonen, G. Haemer, E. Nisenbaum, J.S. Babb, R.I. Grossman, and Y.W. Lui
- 529 Antithrombotic medications and the etiology of intracerebral hemorrhage: MUCH-Italy
A. Pezzini, M. Grassi, M. Paciaroni, A. Zini, G. Silvestrelli, E. Del Zotto, V. Caso, M.L. Dell'Acqua, A. Giossi, I. Volonghi, A.M. Simone, A. Lanari, P. Costa, L. Poli, A. Morotti, V. De Giuli, D. Pepe, M. Gamba, A. Ciccone, M. Ritelli, M. Colombi, G. Agnelli, and A. Padovani, on behalf of the Multicenter Study on Cerebral Hemorrhage in Italy (MUCH-Italy) Investigators

GLOBAL PERSPECTIVES

- 536 The European Association of Young Neurologists and Trainees: The scent of freedom
M. Rakusa, W. Struhal, and J. Sellner

CLINICAL/SCIENTIFIC NOTES

- 540 IgG4-related leptomeningitis: A reversible cause of rapidly progressive cognitive decline
S.H. Mehta, J.A. Switzer, P. Biddinger, and A.M. Rojiani


CONTINUED

Neurology[®]

Table of Contents

continued



REFLECTIONS: NEUROLOGY AND THE HUMANITIES

- 543 Fishing in the dark
J. Chu

NEUROIMAGES

- 544 Pseudo-Popeye syndrome: Extramedullary plasmacytoma manifesting in skeletal muscle
I. Schneider, T. Müller, G. Stoltenburg, H.-J. Holzhausen, C. Mawrin, and F. Hanisch

RESIDENT & FELLOW SECTION

- e46 Clinical Reasoning: An unusual cause of transverse myelitis?
P. Bhargava and R.J. Elble
- e51 Pearls & Oysters: Bilateral cavernous sinus syndrome as presenting manifestation of nasopharyngeal carcinoma
B. Kumari, M.K. Goyal, and V. Lal

- e55 Teaching Video NeuroImages: Spasmodic dysphonia preceding idiopathic parkinsonism
F. Hannah-Shmouni, M. Matiello, D.S. Russell, and M.J. Hasbani



WRITECLICK: EDITOR'S CHOICE

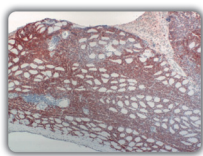
- 546 Cognitive impairment and PD patients' capacity to consent to research
K. Abe; Author Response: J.H. Karlawish
- 546 Responsiveness to reduced dosage of rituximab in Chinese patients with neuromyelitis optica
H. J. Kim, S.-H. Kim, J. Xu, X.-x. Cheng, J.-r. Xu; Author Response: F.-D. Shi, C.-S. Yang, L. Yang, T. Li, W.-N. Jin

DEPARTMENTS

- 548 Books & Digital Media
- A27 In the Next Issue of *Neurology*[®]

Podcast at www.neurology.org CME Video Patient Page LOE classification LOE recommendation

Find us on Facebook [tinyurl.com/neurologyfan](https://www.facebook.com/neurologyfan) twitter twitter.com/GreenJournal



Cover image: Immunohistochemical analysis of muscle tissue from a patient with pseudo-Popeye syndrome identified plasma cells using CD138 antibody, 50 \times . See page 544.

Look for **Publish Ahead of Print** articles and editorials under the Ahead of Print tab at Neurology.org
