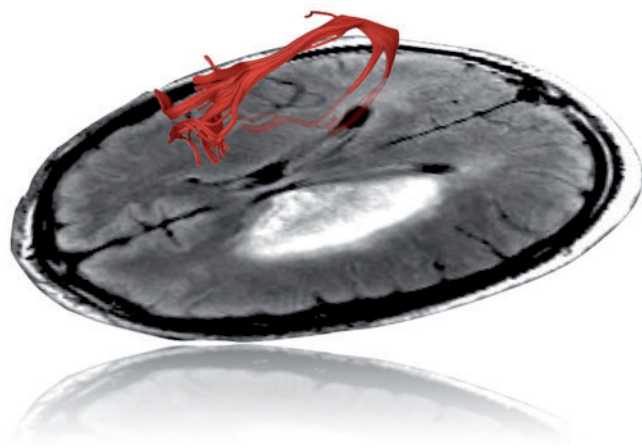


BRAIN

A JOURNAL OF NEUROLOGY



Cover image: Image showing the long segment of the arcuate fasciculus, which plays an important role in language recovery, in the right hemisphere of a stroke patient. The subcortical middle cerebral artery lesion can be seen in the left hemisphere. From Forkel *et al.* Anatomical predictors of aphasia recovery: a tractography study of bilateral perisylvian language networks. pp. 2027–2039.

Contents

Editorial

D. M. Kullmann
1853

Scientific Commentaries

Steering technology for deep brain stimulation
A. L. Green and T. Z. Aziz
1854

Human memory: insights into hippocampal networks in epilepsy
T. Bartsch and S. Arzy
1856

Challenging traditions in apraxia
G. Goldenberg
1858

Theta-burst transcranial magnetic stimulation in depression: when less may be more
Z. J. Daskalakis
1860

Review Article

Prefrontal cortical minicolumn: from executive control to disrupted cognitive processing
I. Opris and M. F. Casanova
1863

Report

Acute mild traumatic brain injury is not associated with white matter change on diffusion tensor imaging
T. Ilvesmäki, T. M. Luoto, U. Hakulinen, A. Brander, P. Ryymin, H. Eskola, G. L. Iverson and J. Öhman
1876

Original Articles

DYNC1H1 mutation alters transport kinetics and ERK1/2-cFos signalling in a mouse model of distal spinal muscular atrophy

C. A. Garrett, M. Barri, A. Kuta, V. Soura, W. Deng, E. M. C. Fisher, G. Schiavo and M. Hafezparast
1883

Endoplasmic reticulum stress in spinal and bulbar muscular atrophy: a potential target for therapy

K. Montague, B. Malik, A. L. Gray, A. R. La Spada, M. G. Hanna, G. Szabadkai and L. Greensmith
1894

Overlapping phenotypes in complex spastic paraplegias SPG11, SPG15, SPG35 and SPG48

V. Pensato, B. Castellotti, C. Gellera, D. Pareyson, C. Ciano, L. Nanetti, E. Salsano, G. Piscoquito, E. Sarto, M. Eoli, I. Moroni, P. Soliveri, E. Lamperti, L. Chiapparini, D. Di Bella, F. Taroni and C. Mariotti
1907

Hypomyelination with atrophy of the basal ganglia and cerebellum: further delineation of the phenotype and genotype–phenotype correlation

E. M. Hamilton, E. Polder, A. Vanderver, S. Naidu, R. Schiffmann, K. Fisher, A. B. Raguž, L. Blumkin, H-ABC Research Group, C. G. M. van Berkel, Q. Waisfisz, C. Simons, R. J. Taft, T. E. M. Abbink, N. I. Wolf and M. S. van der Knaap
1921

Predicting and correcting ataxia using a model of cerebellar function

N. H. Bhanpuri, A. M. Okamura and A. J. Bastian
1931

Differential influence of hippocampal subfields to memory formation: insights from patients with temporal lobe epilepsy

R. Coras, E. Pauli, J. Li, M. Schwarz, K. Rössler, M. Buchfelder, H. Hamer, H. Stefan and I. Blumcke
1945

Convergence of pathology in dementia with Lewy bodies and Alzheimer's disease: a role for the novel interaction of alpha-synuclein and presenilin 1 in disease

A. R. Winslow, S. Moussaud, L. Zhu, K. L. Post, D. W. Dickson, O. Berezovska and P. J. McLean
1958

Critical brain regions for tool-related and imitative actions: a componential analysis

L. J. Buxbaum, A. D. Shapiro and H. B. Coslett
1971

Targeting impulsivity in Parkinson's disease using atomoxetine

A. A. Kehagia, C. R. Housden, R. Regenthal, R. A. Barker, U. Müller, J. Rowe, B. J. Sahakian and T. W. Robbins
1986

Pharmacological stimulation of sigma-1 receptors has neurorestorative effects in experimental parkinsonism

V. Francardo, F. Bez, T. Wieloch, H. Nissbrandt, K. Ruscher and M. A. Cenci
1998

Directional deep brain stimulation: an intraoperative double-blind pilot study

C. Pollo, A. Kaelin-Lang, M. F. Oertel, L. Stieglitz, E. Taub, P. Fuhr, A. M. Lozano, A. Raabe and M. Schüpbach
2015

Anatomical predictors of aphasia recovery: a tractography study of bilateral perisylvian language networks

S. J. Forkel, M. Thiebaut de Schotten, F. Dell'Acqua, L. Kalra, D. G. M. Murphy, S. C. R. Williams and M. Catani
2027

Sequestration of multiple RNA recognition motif-containing proteins by C9orf72 repeat expansions

J. Cooper-Knock, M. J. Walsh, A. Higginbottom, J. Robin Highley, M. J. Dickman, D. Edbauer, P. G. Ince, S. B. Wharton, S. A. Wilson, J. Kirby, G. M. Hautbergue and P. J. Shaw
2040

Within-patient correspondence of amyloid- β and intrinsic network connectivity in Alzheimer's disease

N. Myers, L. Pasquini, J. Göttler, T. Grimmer, K. Koch, M. Ortner, J. Neitzel, M. Mühlau, S. Förster, A. Kurz, H. Förstl, C. Zimmer, A. M. Wohlschläger, V. Riedl, A. Drzezga and C. Sorg
2052

Beyond the temporal pole: limbic memory circuit in the semantic variant of primary progressive aphasia

R. H. Tan, S. Wong, J. J. Kril, O. Piguet, M. Hornberger, J. R. Hodges and G. M. Halliday
2065

Feeling unreal: a functional imaging study in patients with Kleine-Levin syndrome

A. Kas, S. Lavault, M.-O. Habert and I. Arnulf
2077

Efficacy of prefrontal theta-burst stimulation in refractory depression: a randomized sham-controlled study

C.-T. Li, M.-H. Chen, C.-H. Juan, H.-H. Huang, L.-F. Chen, J.-C. Hsieh, P.-C. Tu, Y.-M. Bai, S.-J. Tsai, Y.-C. Lee and T.-P. Su
2088

Dorsal Column

From the Archives

A. Compston
2099

Book Review

The neurology of death and what it does not mean

E. Wijdicks
2105

Letters to the Editor

Syncope and electroencephalography

J. B. P. Stephenson

e284

Reply: Syncope and electroencephalography

J. G. van Dijk, R. D. Thijs, E. van Zwet, M. R. Tannemaat, J. van Niekerk, D. G. Benditt and W. Wieling

e285

A novel missense mutation confirms *ATL3* as a gene for hereditary sensory neuropathy type 1

D. Fischer, M. Schabhüttl, T. Wieland, R. Windhager, T. M. Strom and M. Auer-Grumbach

e286

Shared environmental effects on multiple sclerosis susceptibility: conflicting evidence from twin studies

C. Fagnani, V. A. G. Ricigliano, M. C. Buscarinu, L. Nisticò, M. Salvetti, M. A. Stazi and G. Ristori

e287

Reply: Shared environmental effects on multiple sclerosis susceptibility: conflicting evidence from twin studies

H. Westerlind, R. Kuja-Halkola, R. Ramanujam and J. Hillert

e288

DARS2 gene clinical spectrum: new ideas regarding an underdiagnosed leukoencephalopathy

W. B. V. de Rezende Pinto and P. V. S. de Souza

e289

Reply: DARS2 gene clinical spectrum: new ideas regarding an underdiagnosed leukoencephalopathy

M. S. van der Knaap, E. M. Hamilton and L. van Berge

e290

Corrigendum

e291