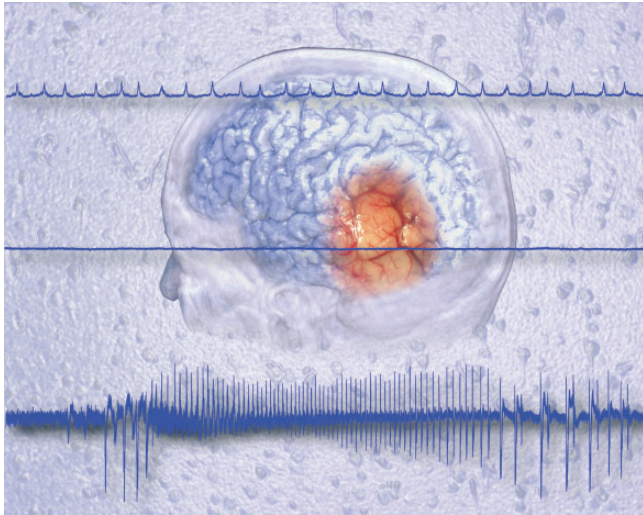


# BRAIN

A JOURNAL OF NEUROLOGY



**Cover image:** Surface rendering reconstructed MRI scan of a left parietal diffuse low-grade glioma (WHO grade II) merged with intraoperative photograph. The *top* trace shows spontaneous interictal discharges recorded from the peritumoral neocortex infiltrated by glioma cells. The *middle* trace, obtained from the glioma core, shows electrophysiological silence. The *bottom* trace, recorded from the peritumoral neocortex infiltrated by glioma cells, shows an electrographic seizure. *Background:* neocortex infiltrated by glioma cells. From Pallud *et al.* Epileptic seizures in diffuse low-grade gliomas in adults. pp. 449–462.

## Contents

### Editorial

D. M. Kullmann  
307

### Scientific Commentaries

**Weighing in on Leber hereditary optic neuropathy: effects of mitochondrial mass**

M. Hirano  
308

**Syncope: how the EEG helps in understanding clinical findings**

M. Solbiati and R. Sheldon  
309

**A (mini) pill for stroke?**

M. Macleod  
311

### Review Article

**The neurology of itch**

A. Dhand and M. J. Aminoff  
313

### Original Articles

**Disease progression in patients with single, large-scale mitochondrial DNA deletions**

J. P. Grady, G. Campbell, T. Ratnaike, E. L. Blakely, G. Falkous, V. Nesbitt, A. M. Schaefer, R. J. McNally, G. S. Gorman, R. W. Taylor, D. M. Turnbull and R. McFarland  
323

**Efficient mitochondrial biogenesis drives incomplete penetrance in Leber's hereditary optic neuropathy**

C. Giordano, L. Iommarini, L. Giordano, A. Maresca, A. Pisano, M. L. Valentino, L. Caporali, R. Liguori, S. Deceglie, M. Roberti, F. Fanelli, F. Fracasso, F. N. Ross-Cisneros, P. D'Adamo, G. Hudson, A. Pyle, P. Yu-Wai-Man, P. F. Chinnery, M. Zeviani, S. R. Salomao, A. Berezovsky, R. Belfort Jr, D. F. Ventura, M. Moraes, M. Moraes Filho, P. Barboni, F. Sadun, A. De Negri, A. A. Sadun, A. Tancredi, M. Mancini, G. d'Amati, P. Loguercio Polosa, P. Cantatore and V. Carelli

335

**Catecholamine metabolism drives generation of mitochondrial DNA deletions in dopaminergic neurons**

J. F. G. Neuhaus, O. R. Baris, S. Hess, N. Moser, H. Schröder, S. J. Chinta, J. K. Andersen, P. Kloppenburg and R. J. Wiesner

354

**Variant non-ketotic hyperglycinemia is caused by mutations in *LIAS*, *BOLA3* and the novel gene *GLRX5***

P. R. Baker II, M. W. Friederich, M. A. Swanson, T. Shaikh, K. Bhattacharya, G. H. Scharer, J. Aicher, G. Creadon-Swindell, E. Geiger, K. N. MacLean, W.-T. Lee, C. Deshpande, M.-L. Freckmann, L.-Y. Shih, M. Wasserstein, M. B. Rasmussen, A. M. Lund, P. Procopis, J. M. Cameron, B. H. Robinson, G. K. Brown, R. M. Brown, A. G. Compton, C. L. Dieckmann, R. Collard, C. R. Coughlin II, E. Spector, M. F. Wempe and J. L. K. Van Hove

366

**Prenatal pharmacotherapy rescues brain development in a Down's syndrome mouse model**

S. Guidi, F. Stagni, P. Bianchi, E. Ciani, A. Giacomini, M. De Franceschi, R. Moldrich, N. Kurniawan, K. Mardon, A. Giuliani, L. Calzà and R. Bartesaghi

380

**Molecular, clinical and peripheral neuropathy study of Tunisian patients with ataxia with vitamin E deficiency**

G. E. Euch-Fayache, Y. Bouhlal, R. Amouri, M. Feki and F. Hentati

402

**The tumour suppressor gene *WWOX* is mutated in autosomal recessive cerebellar ataxia with epilepsy and mental retardation**

M. Mallaret, M. Synofzik, J. Lee, C. A. Sagum, M. Mahajnah, R. Sharkia, N. Drouot, M. Renaud, F. A. C. Klein, M. Anheim, C. Tranchant, C. Mignot, J.-L. Mandel, M. Bedford, P. Bauer, M. A. Salih, R. Schüle, L. Schöls, C. M. Aldaz and M. Koenig

411

**Neuronal merlin influences *ERBB2* receptor expression on Schwann cells through neuregulin 1 type III signalling**

A. Schulz, A. Kyselyova, S. L. Baader, M. J. Jung, A. Zoch, V.-F. Mautner, C. Hagel and H. Morrison

420

**Thymosin beta 4 gene silencing decreases stemness and invasiveness in glioblastoma**

H.-G. Wirsching, S. Krishnan, A.-M. Florea, K. Frei, N. Krayenbühl, K. Hasenbach, G. Reifenberger, M. Weller and G. Tabatabai

433

**Epileptic seizures in diffuse low-grade gliomas in adults**

J. Pallud, E. Audureau, M. Blonski, N. Sanai, L. Bauchet, D. Fontaine, E. Mandonnet, E. Dezamis, D. Psimaras, J. Guyotat, P. Peruzzi, P. Page, B. Gal, E. Párraga, M.-H. Baron, M. Vlaicu, R. Guillevin, B. Devaux, H. Duffau, L. Taillandier, L. Capelle and G. Huberfeld

449

**Physiological sharp wave-ripples and interictal events *in vitro*: what's the difference?**

M. R. Karlócai, Z. Kohus, S. Káli, I. Ulbert, G. Szabó, Z. Máté, T. F. Freund and A. I. Gulyás

463

**Progesterone in experimental permanent stroke: a dose-response and therapeutic time-window study**

B. Wali, T. Ishrat, S. Won, D. G. Stein and I. Sayeed

486

**Identification of retinal ganglion cell neuroprotection conferred by platelet-derived growth factor through analysis of the mesenchymal stem cell secretome**

T. V. Johnson, N. W. DeKorver, V. A. Levasseur, A. Osborne, A. Tassoni, B. Lorber, J. P. Heller, R. Villasmil, N. D. Bull, K. R. Martin and S. I. Tomarev

503

**Hypertrophic pachymeningitis: significance of myeloperoxidase anti-neutrophil cytoplasmic antibody**

A. Yokoseki, E. Saji, M. Arakawa, T. Kosaka, M. Hokari, Y. Toyoshima, K. Okamoto, S. Takeda, K. Sanpei, H. Kikuchi, S. Hirohata, K. Akazawa, A. Kakita, H. Takahashi, M. Nishizawa and I. Kawachi

520

**Inositol trisphosphate 3-kinase B is increased in human Alzheimer brain and exacerbates mouse Alzheimer pathology**

V. Stygelbout, K. Leroy, V. Pouillon, K. Ando, E. D'Amico, Y. Jia, H. R. Luo, C. Duyckaerts, C. Erneux, S. Schurmans and J.-P. Brion

537

**Sustained peripheral depletion of amyloid- $\beta$  with a novel form of neprilysin does not affect central levels of amyloid- $\beta$**

S. J. Henderson, C. Andersson, R. Narwal, J. Janson, T. J. Goldschmidt, P. Appelkvist, A. Bogstedt, A.-C. Steffen, U. Haupts, J. Tebbe, P. O. Freskgård, L. Jermutus, M. Burrell, S. B. Fowler and C. I. Webster

553

**Combined insular and striatal dopamine dysfunction are associated with executive deficits in Parkinson's disease with mild cognitive impairment**

L. Christopher, C. Marras, S. Duff-Canning, Y. Koshimori, R. Chen, I. Boileau, B. Segura, O. Monchi, A. E. Lang, P. Rusjan, S. Houle and A. P. Strafella

565

**The semiology of tilt-induced reflex syncope in relation to electroencephalographic changes**

J. G. van Dijk, R. D. Thijs, E. van Zwet, M. R. Tannemaat, J. van Niekerk, D. G. Benditt and W. Wieling

576

**The neural basis of impaired self-awareness after traumatic brain injury**

T. E. Ham, V. Bonnelle, P. Hellyer, S. Jilka, I. H. Robertson, R. Leech and D. J. Sharp

**586**

**Aberrant topology of striatum's connectivity is associated with the number of episodes in depression**

C. Meng, F. Brandl, M. Tahmasian, J. Shao, A. Manoliu, M. Scherr, D. Schwerthöffer, J. Bäuml, H. Förstl, C. Zimmer, A. M. Wohlschläger, V. Riedl and C. Sorg

**598**

**The caudate: a key node in the neuronal network imbalance of insomnia?**

D. Stoffers, E. Altena, Y. D. van der Werf, E. J. Sanz-Arigita, T. A. Voorn, R. G. Astill, R. L. M. Strijers, D. Waterman and E. J. W. Van Someren

**610**

**Dorsal Column**

**Occasional Paper**

**Weighing brain activity with the balance: Angelo Mosso's original manuscripts come to light**

S. Sandrone, M. Bacigaluppi, M. R. Galloni, S. F. Cappa, A. Moro, M. Catani, M. Filippi, M. M. Monti, D. Perani and G. Martino

**621**

**Letter to the Editor**

**Weighing brain activity with the balance: a contemporary replication of Angelo Mosso's historical experiment**

D. T. Field and L. A. Inman

**634**

**From The Archives**

A. Compston

**640**