

Neurology[®]

Table of Contents

Volume 80, Number 12, March 19, 2013
Neurology.org

THE MOST WIDELY READ AND HIGHLY CITED PEER-REVIEWED
NEUROLOGY JOURNAL



IN FOCUS

- 1071 Spotlight on the March 19 Issue
1160 This Week's *Neurology*[®] Podcast

EDITORIALS

- 1072 Should clinicians care about preclinical animal research?
S.D. Silberberg
- 1074 Are myotonia and epilepsy linked by a chloride channel?
S.F. Berkovic and J. Kapur
- 1076 Blurring of local and remote practice models threatens IOM's future
R.G. Emerson and A.M. Husain

ARTICLES

- 1078 Novel brain expression of ClC-1 chloride channels and enrichment of *CLCN1* variants in epilepsy
T.T. Chen, T.L. Klassen, A.M. Goldman, C. Marini, R. Guerrini, and J.L. Noebels
Editorial, p. 1074

- 1086 One-year safety and tolerability profile of pridopidine in patients with Huntington disease
F. Squitieri, B. Landwehrmeyer, R. Reilmann, A. Rosser, J.G. de Yebenes, A. Prang, J. Ivkovic, J. Bright, and Å. Rembratt



- 1095 Propagation of cortical spreading depolarization in the human cortex after malignant stroke
J. Woitzik, N. Hecht, A. Pinczolits, N. Sandow, S. Major, M.K.L. Winkler, S. Weber-Carstens, C. Dohmen, R. Graf, A.J. Strong, J.P. Dreier, and P. Vajkoczy, For the COSBID study group



- 1103 Vestibular compensation in acute unilateral medullary infarction: FDG-PET study
S. Becker-Bense, H.-G. Buchholz, C. Best, M. Schreckenberger, P. Bartenstein, and M. Dieterich

- 1110 Bumetanide prevents transient decreases in muscle force in murine hypokalemic periodic paralysis
F. Wu, W. Mi, and S.C. Cannon

- 1117 Cortical atrophy in ALS is critically associated with neuropsychiatric and cognitive changes
E. Mioshi, P. Lillo, B. Yew, S. Hsieh, S. Savage, J.R. Hodges, M.C. Kiernan, and M. Hornberger

- 1124 Prediction of Alzheimer disease in subjects with amnesic and nonamnesic MCI
S.J.B. Vos, I.A. van Rossum, F. Verhey, D.L. Knol, H. Soininen, L.-O. Wahlund, H. Hampel, M. Tsolaki, L. Minthon, G.B. Frisoni, L. Froelich, F. Nobili, W. van der Flier, K. Blennow, R. Wolz, P. Scheltens, and P.J. Visser

- 1133 Autoimmune chorea in adults
O. O'Toole, V.A. Lennon, J.E. Ahlskog, J.Y. Matsumoto, S.J. Pittock, J. Bower, R. Fealey, D.H. Lachance, and A. McKeon



GLOBAL PERSPECTIVES

- 1145 Changing face of the Korean Neurological Association
K.-H. Jung, H.D. Yang, and B.S. Jeon

CLINICAL IMPLICATIONS OF NEUROSCIENCE RESEARCH

- 1148 Pedunculo-pontine nucleus: Functional organization and clinical implications
E.E. Benarroch

CONTEMPORARY ISSUES

- 1156 Practice patterns for intraoperative neurophysiologic monitoring
M.R. Nuwer, B.H. Cohen, and K.M. Shepard
Editorial, p. 1076

VIEWS & REVIEWS

- 1161 International Pediatric MS Study Group Clinical Trials Summit: Meeting report
T. Chitnis, M. Tardieu, M.P. Amato, B. Banwell, A. Bar-Or, A. Ghezzi, A. Kornberg, L.B. Krupp, D. Pohl, K. Rostasy, S. Tenenbaum, E. Waubant, and E. Wassmer

CONTINUED

Neurology[®]

Table of Contents

continued



CLINICAL/SCIENTIFIC NOTES

- 1169 Niemann-Pick type C is frequent in adult ataxia with cognitive decline and vertical gaze palsy
J. Schicks, J.M. vom Hagen, P. Bauer, S. Beck-Wödl, S. Biskup, I. Krägeloh-Mann, L. Schöls, and M. Synofzik



NEUROIMAGES

- 1171 Serial carotid MRI identifies rupture of a vulnerable plaque resulting in amaurosis fugax
F. Schwarz, A. Bayer-Karpinska, H. Poppert, M. Buchholz, C. Cyran, J. Grimm, A. Helck, K. Nikolaou, C. Opherk, M. Dichgans, and T. Saam

RESIDENT & FELLOW SECTION

- e120 Clinical Reasoning: An 85-year-old man with paresthesias and an unsteady gait
A.L. Berkowitz, R.M. Jha, J.P. Klein, and A.A. Amato
- e127 Residency Training: Teaching communication: Residency is not too late
S. Maiser
- e130 Teaching *NeuroImages*: Hypomelanosis of Ito
A.S. Khaku, V.S. Hedna, and A. Nayak

- e131 Teaching *NeuroImages*: "Numb chin syndrome" in a patient with breast cancer
S. Oravivattanakul, M. Coffey, L. Teston, and L.R. Rogers

WRITECLICK: EDITOR'S CHOICE

- 1173 Cognitive outcome of patients with classic infantile Pompe disease receiving enzyme therapy
G.A. Spiridigliozzi, J.H. Heller, P.S. Kishnani; Author Response: A.T. Van der Ploeg, B.J. Ebbink, F.K. Aarsen, C.M. van Gelder, J.M.P. Van den Hout
- 1173 Chocolate consumption and risk of stroke: A prospective cohort of men and meta-analysis
M.R. Walters, C. Williamson, K. Lunn, A. Munteanu

CORRECTION

- 1174 Novel brain expression of CLC-1 chloride channels and enrichment of *CLCN1* variants in epilepsy

DEPARTMENTS

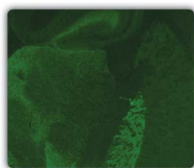
- 1175 Book Review
- A37 In the Next Issue of *Neurology*[®]

Podcast at www.neurology.org CME Video Patient Page LOE classification LOE recommendation



find us on
Facebook

tinyurl.com/neurologyfan twitter.com/GreenJournal



Cover image: GAD65-IgG detected by indirect immunofluorescence on coronal section of mouse brain revealing characteristic synaptic staining pattern. See page 1133.

Publish Ahead of Print articles and editorials go live every Wednesday at 4 pm US Eastern time! Visit neurology.org.